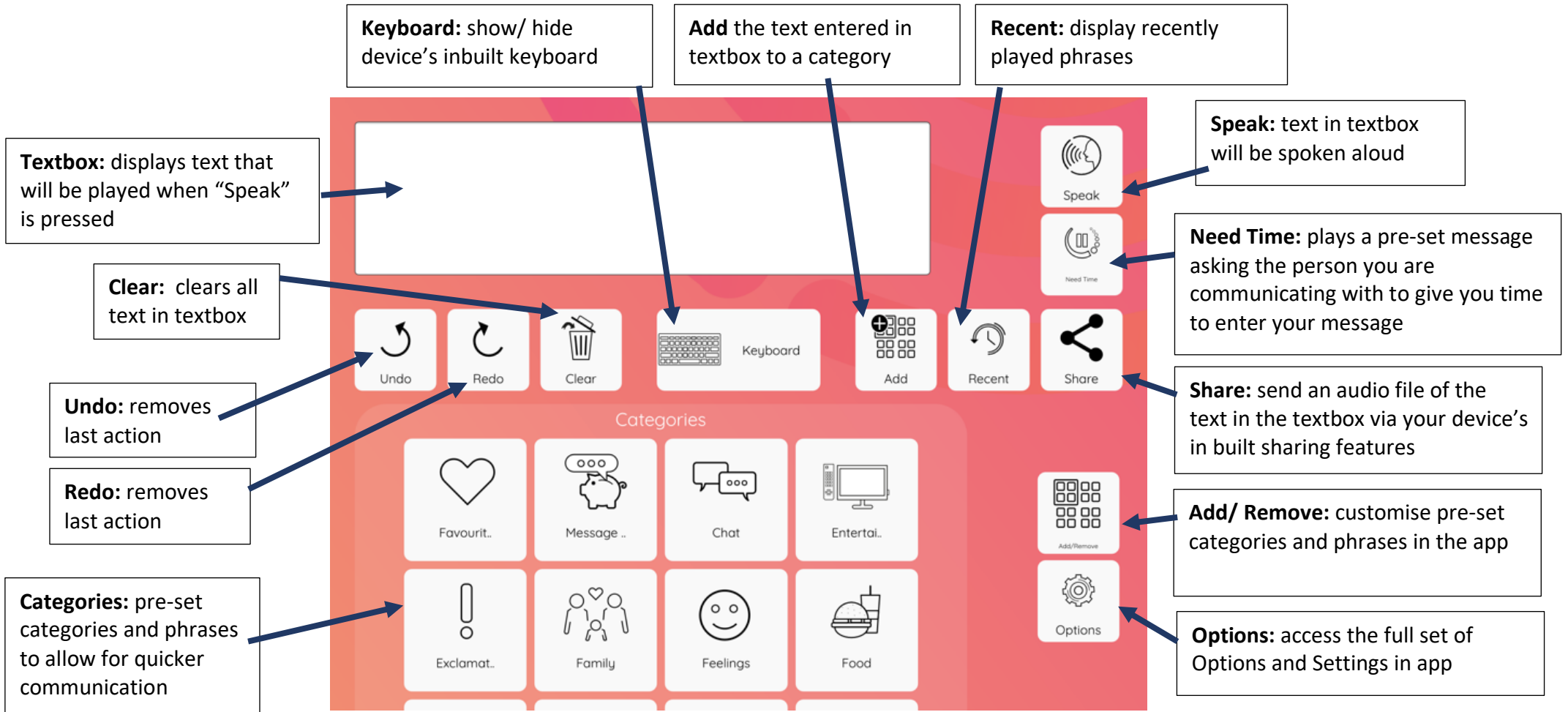


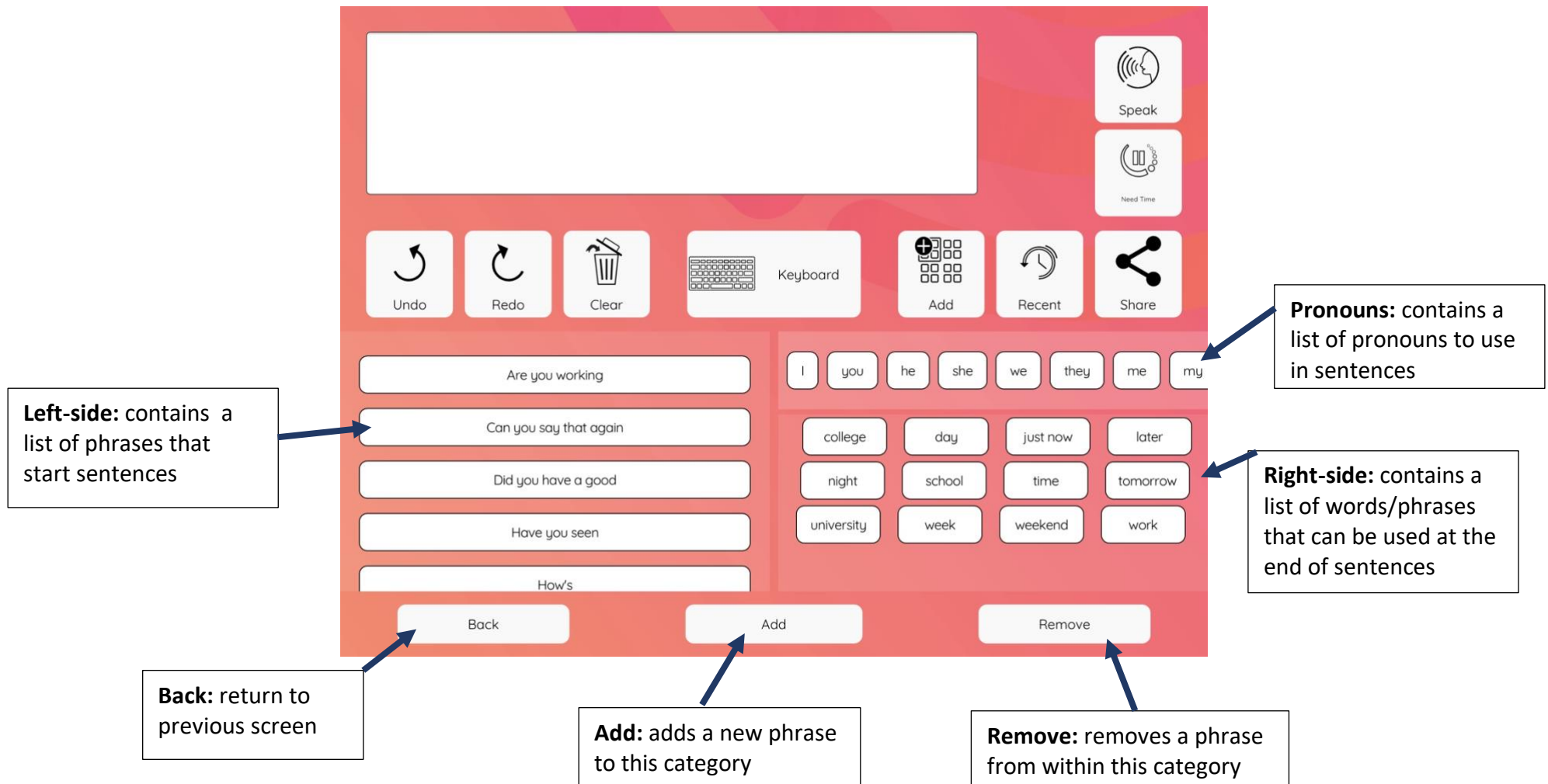
Features in the app

The Home Screen



Within a category

The main function buttons within the app will stay in the same position when you open a category.



The Options Screen

Theme: switch between Light & Dark view of the app

Font: change the font style and text size

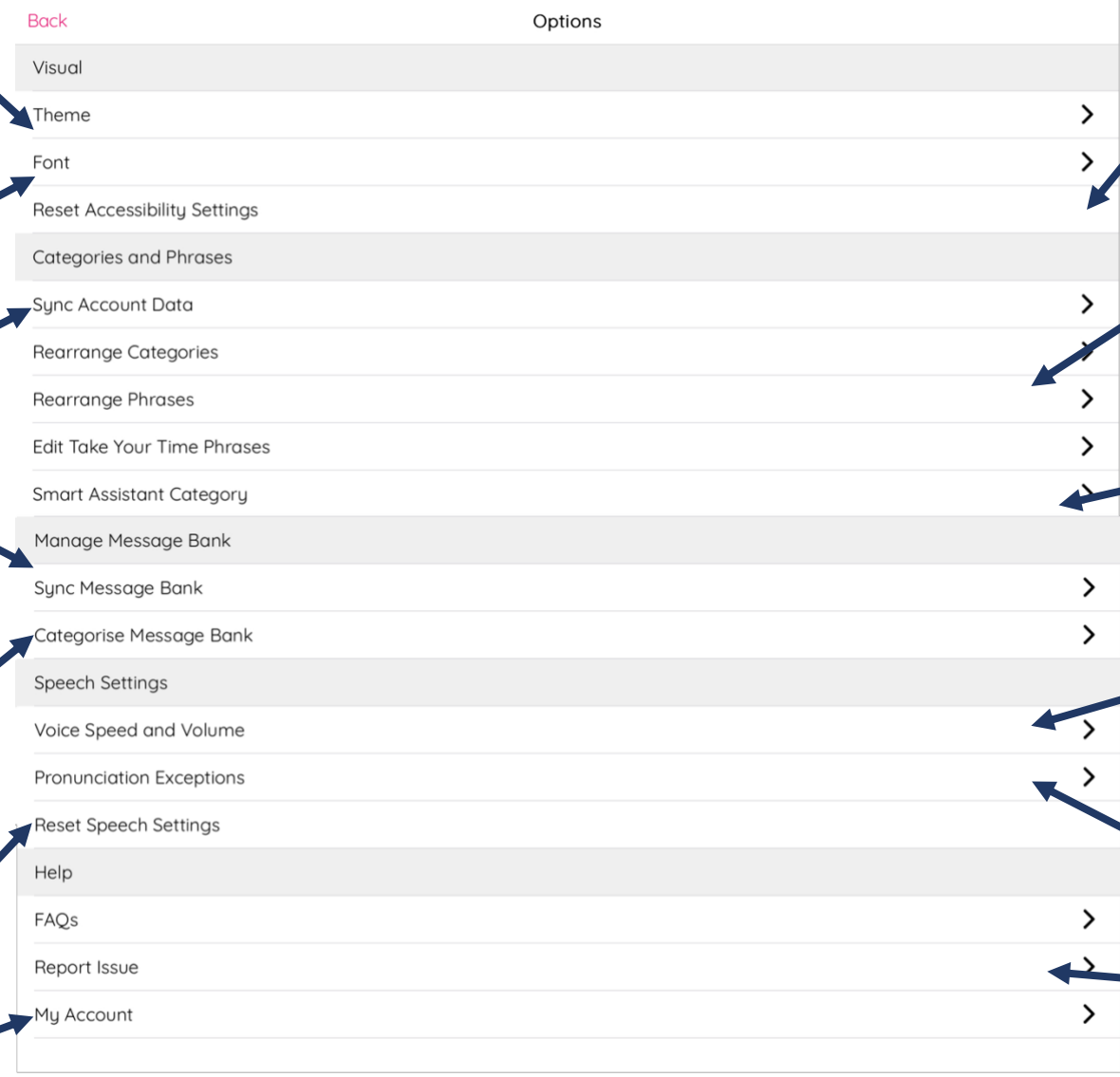
Sync Account Data: sync categories, pronunciation exceptions and “Take Your Time” phrases across devices

Sync Message Bank: sync your message bank phrases across devices

Categorise Message Bank: change the categories your message bank phrases appear in

Reset Speech Settings: resets back to the settings when voice was first downloaded

My Account: log out and download your voice



Reset Accessibility Settings: reset font, text size to standard settings

Rearrange Categories & Phrases: drag to reorder how categories and phrases are displayed

Smart Assistant Category: use the app to control your smart speaker, such as Google Home or Amazon Alexa. Turn the category on and off here, and select which system you are using

Voice Speed and Volume: alter the speed and volume that the voice is played at

Pronunciation Exceptions: change the way words are pronounced

Report Issue: use your device’s in-built email settings to report an issue with the app or your voice